

Commonwealth of Kentucky DEPARTMENT OF HIGHWAYS

PLANS OF PROPOSED PROJECT

**MOUNTAIN PARKWAY
CAMPTON TO SALYERSVILLE
MORGAN COUNTY
PROJECT NO. FD04 088 9009 059-063 D**



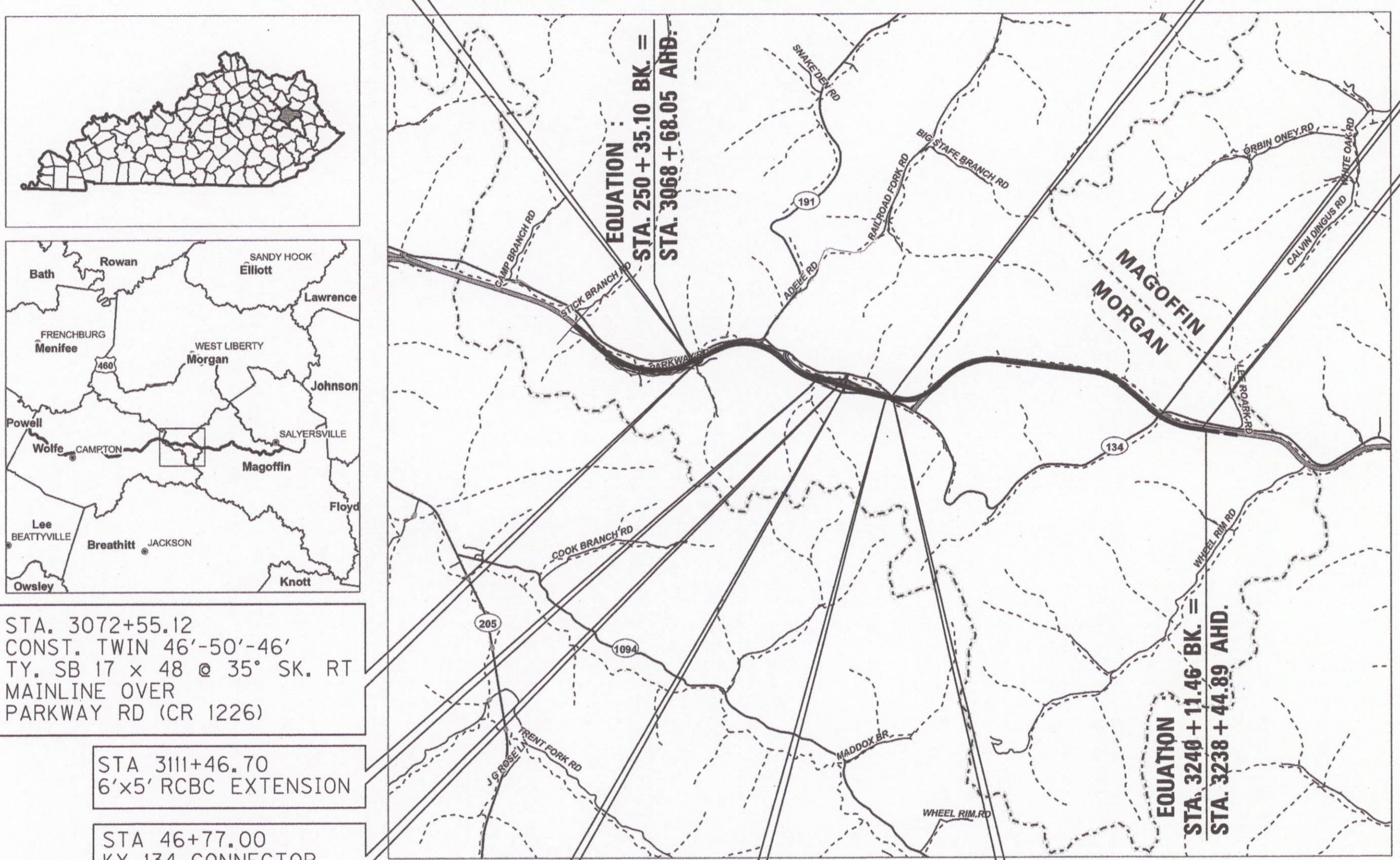
SHEET NO.	DESCRIPTION
R1	LAYOUT SHEET
R2 - R2e	TYPICAL SECTIONS
R3 - R30	PLAN AND PROFILE SHEETS
R31	RIGHT OF WAY SUMMARY SHEETS
R32 - R35	RIGHT OF WAY STRIP MAP SHEETS
R36 - R38	COORDINATE CONTROL SHEETS
R39	R/W MONUMENTATION SHEET
S	STRUCTURE PLANS
T	TRAFFIC PLANS
U	UTILITY RELOCATION PLANS
XI	CROSS SECTION SHEETS

Department Of Highways
Mt Parkway Item - 10-126.60
LICKING VALLEY RECC W.O.# KY 56 - 581 & X

Unit Tabulation

SI	Install	Removal	Poles
	30'-6"	30'-6"	2
	40'-4"	40'-4"	3
	45'-3"	45'-3"	4
	60'-1"	60'-1"	1
			Units
	A1-1	A1-1	1
	A5	A5	1
	A5-2	A5-2	3
	C1-2	C1-2	2
	C1-2	C1-2	2
	C2-2	C2-2	2
	C4-1	C4-1	3
	C8	C8	3
	E1-2	E1-2	5
	E1-3	E1-3	21
	F1-2	F1-2	5
	F1-3	F1-3	17
	G7A	G-10KVA	1
	E1-2	G-15 KVA	3
	E2-3	K11c	3
	E1-3	K14	1
	E9-2	M2-1	6
	F1-2	M2-2	2
	F1-3	M5-1	13
	G-10KVA	M5-2	2
	G-15KVA	M5-4	1
	K11c	M5-5	4
	M2-1	M5-6	3
	M2-2	M5-10	2
	M5-2	M8	1
	M5-4		
	M5-5	Wire	
	M5-10	#2 TPX	360'
	M5-1	#4 ACSR	1,420'
		3/0 ACSR	11,205'
		1/0 ACSR	3,735'
			Poles
		Private	13
		Public	1
		New Poles	13
		Rem Poles	15

PROPOSED POWERLINE
POWERLINE TO BE REMOVED
POWERLINE TO STAY



STA. 3072+55.12
CONST. TWIN 46'-50'-46'
TY. SB 17 x 48 @ 35° SK. RT
MAINLINE OVER
PARKWAY RD (CR 1226)

STA 3111+46.70
6'x5' RCBC EXTENSION

STA 46+77.00
KY 134 CONNECTOR
10'x6' RCBC

STA 3120+00.00
CONST 105-105 TY. IV
PCIB @ 0° SK.

STA. 3133+16.85
EXTEND EXISTING
8'x6' RCBC

STA. 3135+39.46 (32' RT.)
CONST. 60'-95'-70'
TY. III PCIB @ 55° SK. LT
MAINLINE OVER KY 134

STA. 3134+68.50 (32'LT.)
MP 60.462
CONST. 50'-70'-66'
TY. II PCIB @ 46° SK. LT
MAINLINE OVER KY 134

STA. 3225+31.89 MP 62.206
CONST. TWIN 100'-100'
TY. IV PCIB @ 9° SK. RT
MAINLINE OVER KY 134
& JOHNSON CREEK

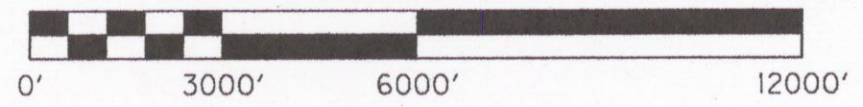
END R/W
STA. 3238 + 68.34
MP 62.465

THIS PROJECT IS ON THE
NATIONAL HIGHWAY SYSTEM

THIS PROJECT IS A FULLY
CONTROLLED ACCESS HIGHWAY

RIGHT OF WAY PLANS

LAYOUT MAP



DESIGN CRITERIA	
CLASS OF HIGHWAY	ARTERIAL
TYPE OF TERRAIN	MOUNTAINOUS
DESIGN SPEED	65 MPH
REQUIRED NPSD	645 FEET
REQUIRED PSD	
LEVEL OF SERVICE	
ADT PRESENT ()	5000 / 6700
ADT FUTURE (2030)	6900 / 10,300
DHV (2030) 1550	
D %	
T %	

GEOGRAPHIC COORDINATES	
LATITUDE	37 DEGREES 45 MINUTES 11 SECONDS NORTH
LONGITUDE	83 DEGREES 16 MINUTES 57 SECONDS WEST
DESIGNED	
% RESTRICTED SD	
LEVEL OF SERVICE	
MAX. DISTANCE W/O PASSING	

MAINLINE		RAILROAD CROSSINGS		RAILROAD CROSSINGS		RAILROAD CROSSINGS	
LENGTH	ADDED DEDUCTED	NO. OF CROSSINGS	BRIDGES	NO. OF CROSSINGS	BRIDGES	NO. OF CROSSINGS	BRIDGES
16,898.34	3,200						

**Commonwealth of Kentucky
DEPARTMENT OF HIGHWAYS
COUNTY OF**

MORGAN

MOUNTAIN PARKWAY

ITEM NO. 10-126.60
PROJECT NUMBER: FD04 088 9009 059-063 D
LETTING DATE: _____

RECOMMENDED BY: _____ PROJECT MANAGER DATE: _____
PLAN APPROVED BY: _____ STATE HIGHWAY ENGINEER DATE: _____

HMB Professional Engineers, Inc.
3 HMB Circle
Frankfort, KY 40601
(502) 695-9800
(502) 695-9810 FAX

HMB
PROFESSIONAL ENGINEERS, INC.

4-2-15
DATE: _____
SIGNED: _____

Robert J. Dowler
22548
LICENSED PROFESSIONAL ENGINEER

FILE NAME: G:\ENGR\HD\202.00\CAD\DETAILS\LAYOUT RW.DGN
USER: sdcuirty
DATE PLOTTED: April 2, 2015
E-SHEET NAME:
MicroStation v8.11.7.180

RAMP A CURVE DATA
 PI 15+68.22
 Delta = 12° 51' 02" RT.
 T = 191.45'
 L = 381.29'
 R = 1700.00'
 E = 10.75'
 e = 5.0%
 Runoff = } See
 Runout = } Diagram

POLES
 PUBLIC-D
 PRIVATE-5

16-93
18
I-414, C22, A52, M2-1
E12, F14, M5-10, M5-1
N-45/2, (2) C1A, A52, M2-1
(5) E12, (5) E3-10, (5) F12
M5-10, M5-1, (5) E9-Z

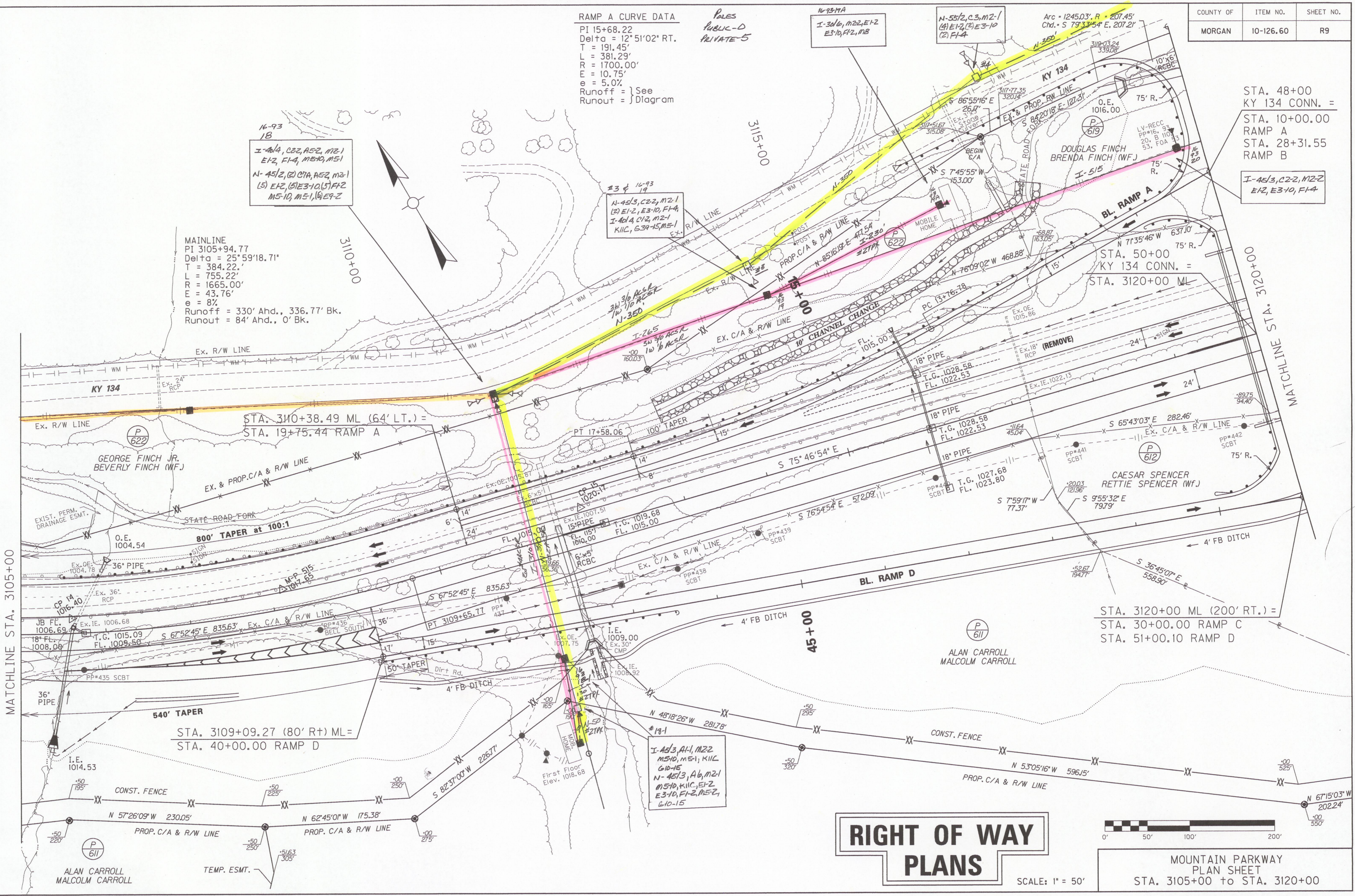
MAINLINE
 PI 3105+94.77
 Delta = 25° 59' 18.71"
 T = 384.22'
 L = 755.22'
 R = 1665.00'
 E = 43.76'
 e = 8%
 Runoff = 330' Ahd., 336.77' Bk.
 Runout = 84' Ahd., 0' Bk.

STA. 48+00
KY 134 CONN. =
 STA. 10+00.00
RAMP A
 STA. 28+31.55
RAMP B
 I-45/3, C2-2, M2-2
E12, E3-10, F14

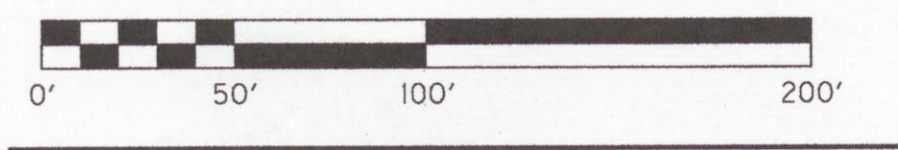
STA. 50+00
KY 134 CONN. =
 STA. 3120+00 ML

STA. 3120+00 ML (200' RT.) =
 STA. 30+00.00 RAMP C
 STA. 51+00.10 RAMP D

FILE NAME: G:\ENGR\H202.00\SUBMITTALS\REVISED RW PLANS TO GEC 3-31-15\N9 3105PL.DGN
 USER: jmyer
 DATE PLOTTED: April 2, 2015
 E-SHEET NAME:
 MicroStation v8.11.7.180



RIGHT OF WAY PLANS



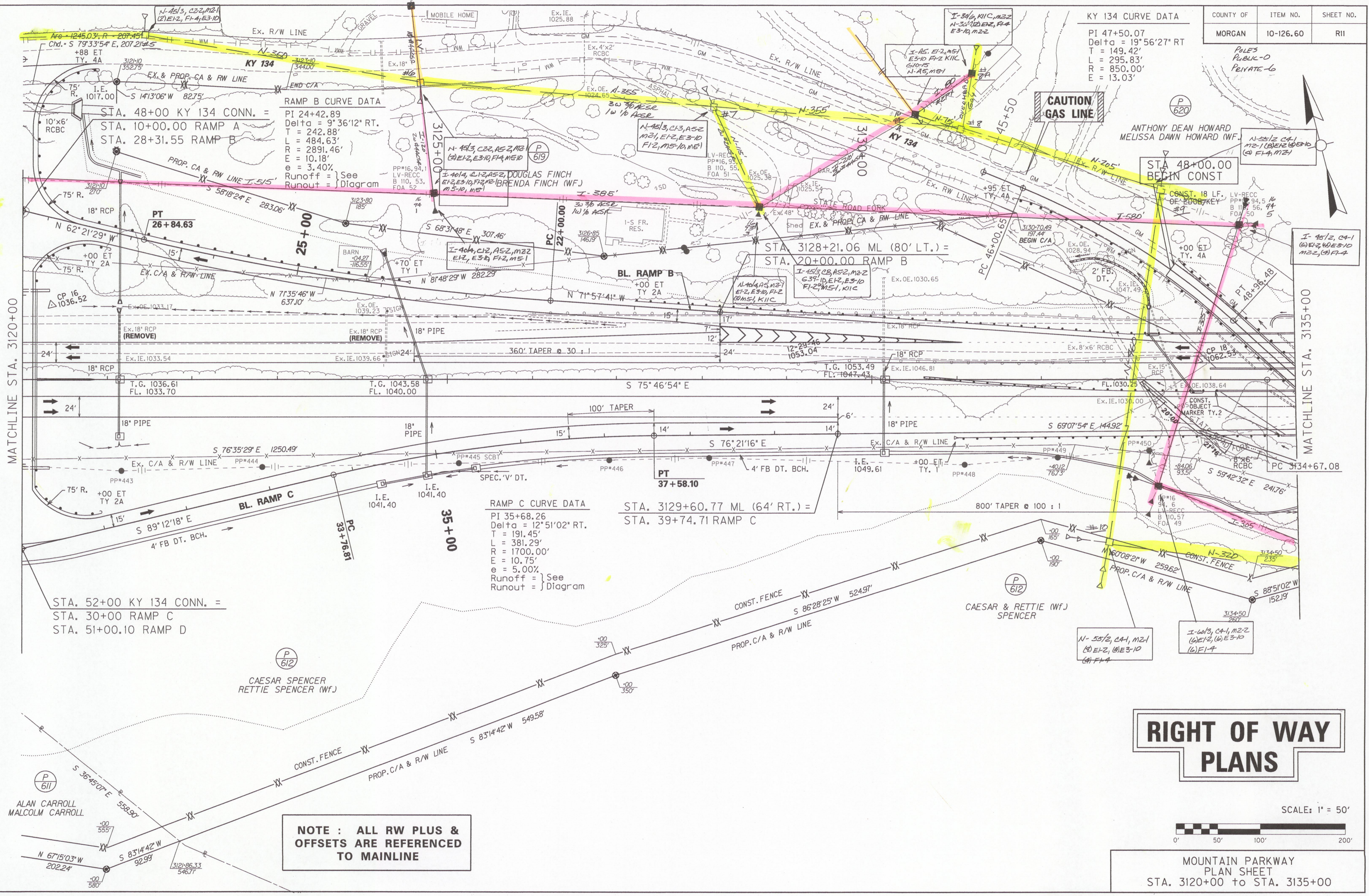
SCALE: 1" = 50'

MOUNTAIN PARKWAY
 PLAN SHEET
 STA. 3105+00 to STA. 3120+00

COUNTY OF	ITEM NO.	SHEET NO.
MORGAN	10-126.60	R11

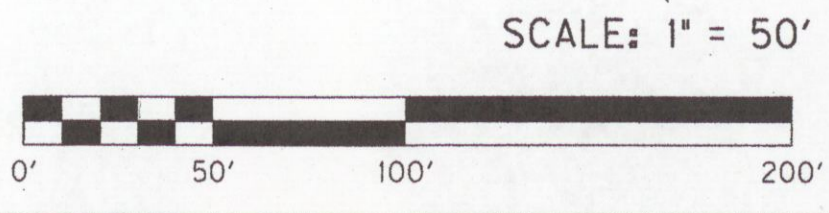
KY 134 CURVE DATA
 PI 47+50.07
 Delta = 19°56'27" RT
 T = 149.42'
 L = 295.83'
 R = 850.00'
 E = 13.03'

POLES
 PUBLIC-0
 PRIVATE-6



NOTE : ALL RW PLUS & OFFSETS ARE REFERENCED TO MAINLINE

RIGHT OF WAY PLANS



MOUNTAIN PARKWAY
 PLAN SHEET
 STA. 3120+00 to STA. 3135+00

FILE NAME: G:\ENGR\HD\202.00\SUBMITTALS\REVISED RW PLANS TO GEC 3-31-15\RII 3120PL.DGN
 USER: jmeyer
 DATE PLOTTED: April 2, 2015
 E-SHEET NAME:
 MicroStation v8.11.7.180

COUNTY OF	ITEM NO.	SHEET NO.
MORGAN	10-126.60	R13

KY 134

PI 47+50.07
 Delta = 19°56'27" RT
 T = 149.42'
 L = 295.83'
 R = 850.00'
 E = 13.03'

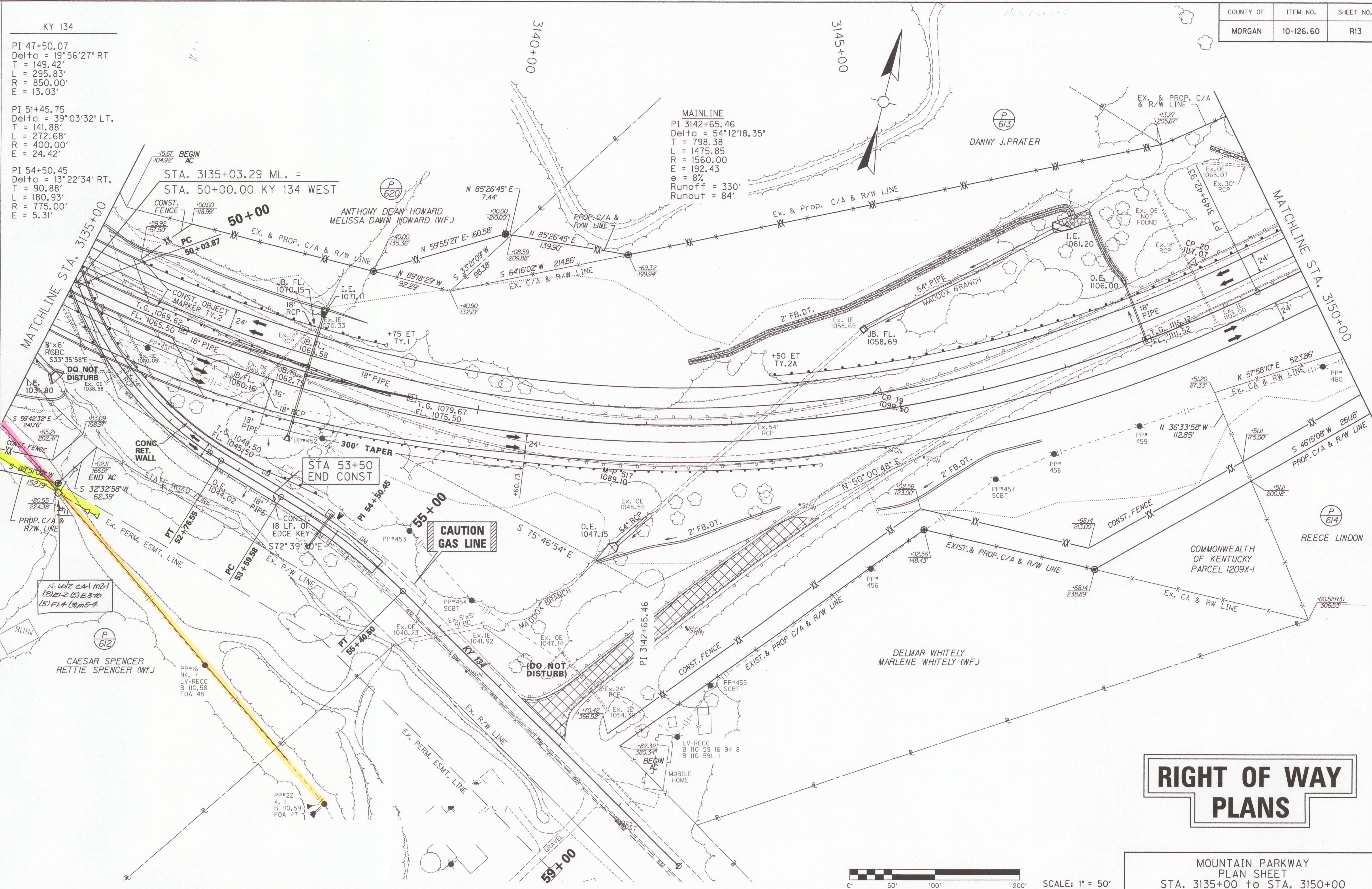
PI 51+45.75
 Delta = 39°03'32" LT
 T = 141.88'
 L = 272.68'
 R = 400.00'
 E = 24.42'

PI 54+50.45
 Delta = 13°22'34" RT
 T = 90.88'
 L = 180.93'
 R = 775.00'
 E = 5.31'

MAINLINE
 PI 3142+65.46
 Delta = 54°12'18.35"
 T = 798.38
 L = 1475.85
 R = 1560.00
 E = 192.43
 e = 8%
 Runoff = 330'
 Runout = 84'

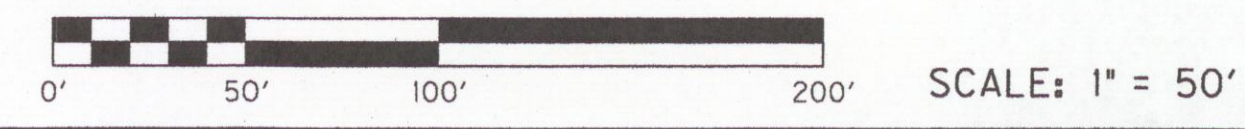
STA. 3135+03.29 ML. =
 STA. 50+00.00 KY 134 WEST

FILE NAME: G:\ENGR\HD1202.00\SUBMITTALS\REVISED RW PLANS TO GEC 3-31-15\ARI3 3135PL1.DGN
 USER: jneyer
 DATE PLOTTED: April 2, 2015
 E-SHEET NAME:
 MicroStation v8.11.7.180



RIGHT OF WAY PLANS

MOUNTAIN PARKWAY
 PLAN SHEET
 STA. 3135+00 to STA. 3150+00

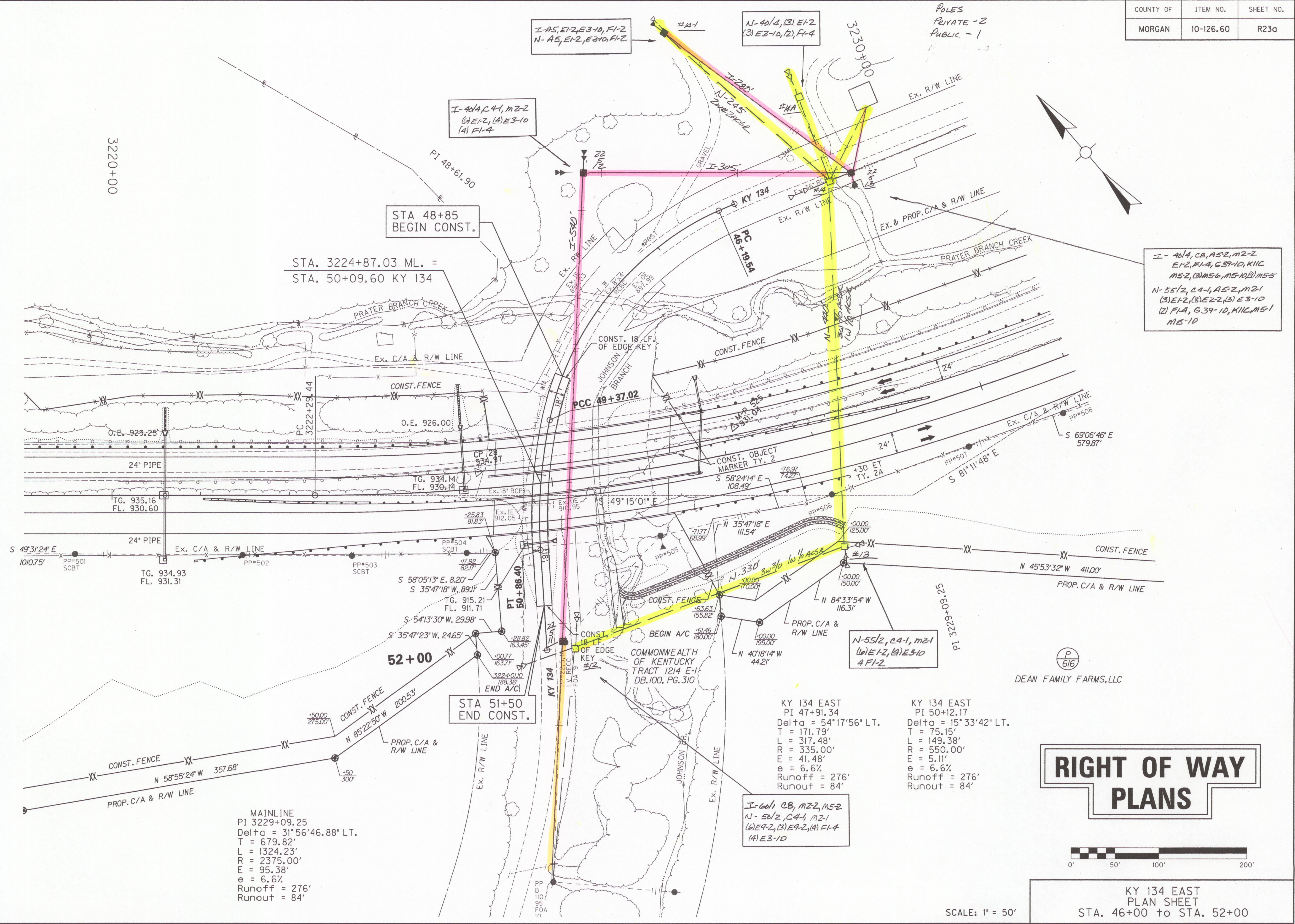


FILE NAME: G:\ENGR\HD1202.00\SUBMITTALS\REVISED RW PLANS TO DEC 3-31-15\NR23A KY 134 EAST PL.DGN

USER: jmayor
DATE PLOTTED: April 2, 2015

E-SHEET NAME:

MicroStation v8.11.7.180



STA 48+85
BEGIN CONST.

STA. 3224+87.03 ML. =
STA. 50+09.60 KY 134

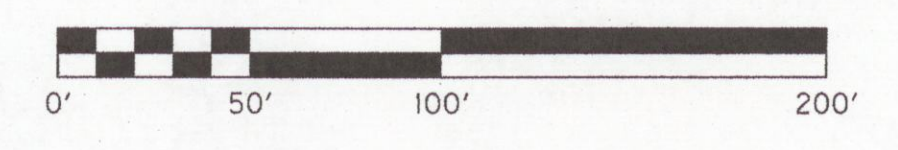
STA 51+50
END CONST.

MAINLINE
PI 3229+09.25
Delta = 31°56'46.88" LT.
T = 679.82'
L = 1324.23'
R = 2375.00'
E = 95.38'
e = 6.6%
Runoff = 276'
Runout = 84'

KY 134 EAST
PI 47+91.34
Delta = 54°17'56" LT.
T = 171.79'
L = 317.48'
R = 335.00'
E = 41.48'
e = 6.6%
Runoff = 276'
Runout = 84'

KY 134 EAST
PI 50+12.17
Delta = 15°33'42" LT.
T = 75.15'
L = 149.38'
R = 550.00'
E = 5.11'
e = 6.6%
Runoff = 276'
Runout = 84'

RIGHT OF WAY PLANS

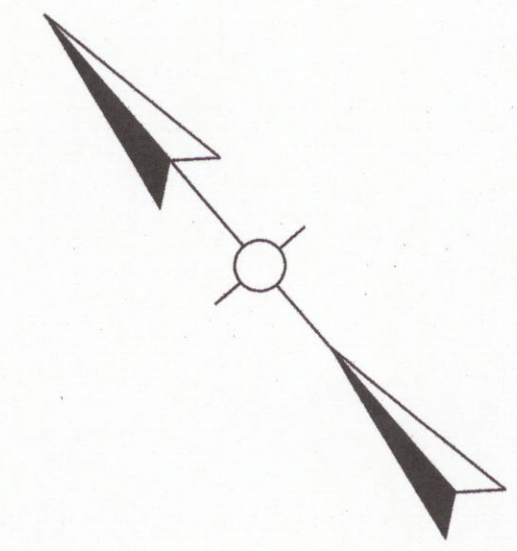


KY 134 EAST
PLAN SHEET
STA. 46+00 TO STA. 52+00

SCALE: 1" = 50'

DEAN FAMILY FARMS, LLC

P
616



I- 46/4, CB, A5-2, M2-2
E1-2, F1-4, G3-10, K1C
M5-2, (3) M5-6, (1) M5-10, (1) M5-5
N- 55/2, C4-1, A5-2, M2-1
(3) E1-2, (3) E2-2, (3) E3-10
(2) F1-4, G3-10, K1C, M5-1
M5-10

I- 46/4, C4-1, M2-2
(1) E1-2, (1) E3-10
(1) F1-4

I- A5, E1-2, E3-10, F1-2
N- A5, E1-2, E3-10, F1-2

N- 40/4, (3) E1-2
(3) E3-10, (2) F1-4

POLES
PRIVATE - 2
PUBLIC - 1

I- 60/1, CB, M2-2, M5-2
N- 56/2, C4-1, M2-1
(1) E1-2, (3) E2-2, (1) F1-4
(1) E3-10